

CUTING

Design: + creation

Scheda Tecnica

Struttura: in legno di multistrato, abete e faggio, rivestita con poliuretano espanso indeformabile e vellutino accoppiato.

Molleggio: cinghia elastica ultraflex intrecciata.

Imbottitura seduta: poliuretano espanso indeformabile rigido.

Imbottitura schienale: poliuretano espanso indeformabile rigido.

Cuscini: piuma d'oca.

Piedini: polipropilene nero, a richiesta in legno o alluminio.

Caratteristiche: Il modello cutting non è sfoderabile.

Viste di profilo / Side views

Data Sheet

Structure: multiply wood, pinewood and beech-wood foamed in non-deformable polyurethane coupled to fine velveteen.

Springing: ultraflex cross-elastic belts.

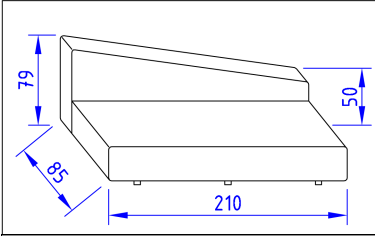
Seat padding: elastic non-deformable polyurethane foam.

Backrest padding: elastic non-deformable polyurethane foam.

Cushions: filled with goose-down

Feet: in black polypropylene or upon demand in wood or aluminium

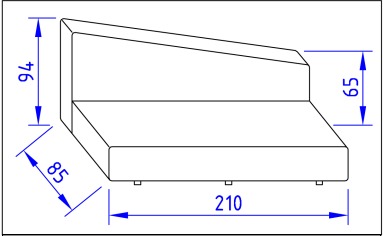
Peculiarity: cutting model is not removable cover



divano cutting schienale basso

Code **CUT B 079** Kg **52** m3 **1,88**

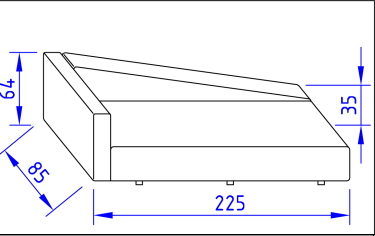
Rivestimento / Cover mt. **8**



divano cutting schienale alto

Code **CUT B 094** Kg **55** m3 **2,09**

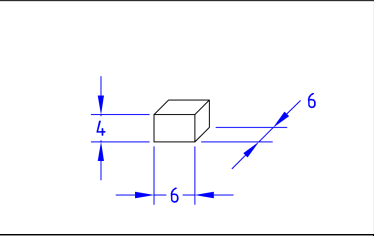
Rivestimento / Cover mt. **8**



divano cutting bracciolo/schienale

Code **CUT B 094** Kg **65** m3 **1,65**

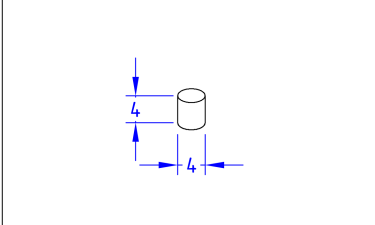
Rivestimento / Cover mt. **10**



pedino legno

Code **CUT S 901** Kg **0** m3 **0,00**

Rivestimento / Cover mt. **0**



pedino alluminio

Code **CUT S 902** Kg **0** m3 **0,00**

Rivestimento / Cover mt. **0**