



## PLANE

Design: Marco Massimo Melchiorri

---

### Scheda Tecnica

Struttura: in legno di multistrato, abete e faggio, rivestita con poliuretano espanso indeformabile e vellutino accoppiato.

Molleggio: cinghia elastica ultraflex intrecciata.

Imbottitura seduta: poliuretano espanso indeformabile rigido.

Piedini: polipropilene nero, a richiesta in legno o alluminio.

Caratteristiche: Il modello plane è sfoderabile.

---

### Viste di profilo / Side views

---

### Data Sheet

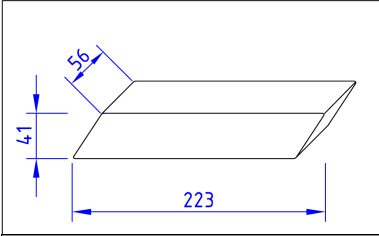
Structure: multiply wood, pinewood and beech-wood foamed in non-deformable polyurethane coupled to fine velveteen.

Springing: ultraflex cross-elastic belts.

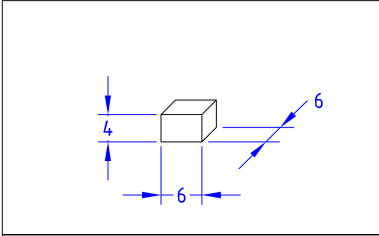
Seat padding: elastic non-deformable polyurethane foam.

Feet: in black polypropylene or upon demand in wood or aluminium

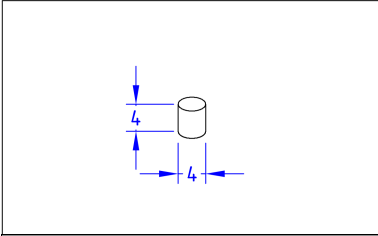
Peculiarity: plane model fully removable cover.



**seduta Plane**



**pedino legno**



**pedino alluminio**

Code	<b>PLA Q 257</b>	Kg	<b>42</b>	m3	<b>0,70</b>
------	------------------	----	-----------	----	-------------

Code	<b>PLA S 901</b>	Kg	<b>0</b>	m3	<b>0,00</b>
------	------------------	----	----------	----	-------------

Code	<b>PLA S 902</b>	Kg	<b>0</b>	m3	<b>0,00</b>
------	------------------	----	----------	----	-------------

Rivestimento / Cover	mt.	<b>6</b>
----------------------	-----	----------

Rivestimento / Cover	mt.	<b>0</b>
----------------------	-----	----------

Rivestimento / Cover	mt.	<b>0</b>
----------------------	-----	----------