

YNG YANG

Design: Rita Argalia

Scheda Tecnica

Struttura: in legno di multistrato, abete e faggio, rivestita con poliuretano espanso indeformabile e vellutino accoppiato.

Imbottitura seduta: poliuretano espanso indeformabile rigido.

Piedini: polipropilene nero, a richiesta in legno o alluminio (n° 12 per codice YNGQ200 - n° 14 per codice YNGQ250 - n° 18 per codice YNGQ300).

Caratteristiche: Il modello yng yang è sfoderabile.

Viste di profilo / Side views

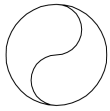
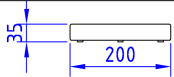
Data Sheet

Structure: multiply wood, pinewood and beech-wood foamed in non-deformable polyurethane coupled to fine velveteen.

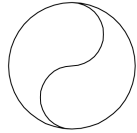
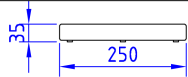
Seat padding: elastic non-deformable polyurethane foam.

Feet: in black polypropylene or upon demand in wood or aluminium (n° 12 for code YNGQ200 - n° 14 for code YNGQ250 - n° 18 for code YNGQ300)

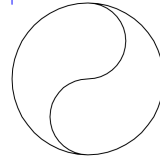
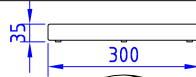
Peculiarity: yng yang model fully removable cover.



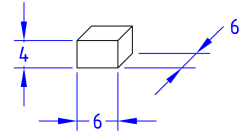
seduta Yng yang diametro 200



seduta Yng yang diametro 250



seduta Yng yang diametro 300



pedino legno

Code **YNG Q 200** Kg **100** m3 **1,80**

Rivestimento / Cover mt. **9**

Code **YNG Q 250** Kg **140** m3 **3,05**

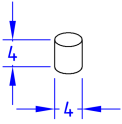
Rivestimento / Cover mt. **13**

Code **YNG Q 300** Kg **190** m3 **4,30**

Rivestimento / Cover mt. **16**

Code **YNG S 901** Kg **0** m3 **0,00**

Rivestimento / Cover mt. **0**



pedino alluminio

Code **YNG S 902** Kg **0** m3 **0,00**

Rivestimento / Cover mt. **0**